

Newsletter



MAYOR'S MESSAGE

Words can't begin to describe how many of us are feeling at this point in time, with the tragedy from the other day. I can pretty much guarantee that I speak for the whole Shire in offering our sincerest condolences to Darren and Shelby Heslin for the loss of their youngest child, Felicity who was the victim of an insidious organism called *Naegleria fowleri*. This amoeba causes a condition called primary amoebic meningoencephalitis (PAM). Even with treatment, most people with a *Naegleria fowleri* infection don't make it, and it seems that kids and young adults are the most vulnerable. There is no antidote cure and there is no magical vaccination.

The Heslin family want to make sure that the word is spread far and wide on the dangers of this bug or whatever you want to call it. Even though it is extremely rare to be infected the danger is always there and seems to be present in a large radius from where it is found. The organism enters the body via the nose and attacks the brain causing irreversible damage resulting in coma and ultimately death. The only safeguard is to make sure your

children are educated to the dangers and refrain from diving into pools or waterholes, spraying water up their noses and any other activity that may let water into their nostrils. Sounds crazy I know but it is really the only safeguard you have.



The other thing to remember is the fact that it can only survive in temperatures of 25°C and above but chlorine from 0.5mg/L and higher concentrations will kill it. This message is targeted at rural families without treated water but town residents who have rainwater tanks and the like need to be aware also. Investing in a filtration system for household use seems to me to be the only way to go. The least you could do at this time of year is to make sure your tanks are flushed and cleaned with a chlorine solution when the first storms begin.

Newsletter

Please refer to the links below from the Queensland Health website for detailed information on ensuring safe water on rural properties and understanding parasites. Please have a read and make up your own mind but remember to have fun with the hose safely when the kids are playing on those stinking hot days that won't even give you a breath of fresh air. From my point of view, I think the danger time is already here and will continue all the way through to the winter months after our wet. Unfortunately, because it is rare to be infected, we tend to go off the boil with our vigilance but in this instance, with this grub, I don't think we can afford to go to sleep and need to stay alert at all times when it comes to playing in the water.

On that note I will wish the Heslin family all the best and hope that the pain of their loss becomes more bearable as time goes on.

Stay safe everyone.

Jack Bawden

Queensland Health

Safe water on rural properties

Downloadable PDF

https://www.health.qld.gov.au/__data/assets/pdf_file/0025/444616/safe-water-rural-properties.pdf



Infections and Parasites

Weblink

<https://www.qld.gov.au/health/condition/infections-and-parasites/parasites/naegleria-fowleri-qs-as>



GET READY QLD

Weather doesn't plan, but you can.

Severe weather in Queensland can hit unexpectedly, and being ready is key to a quicker recovery. Research shows that households with a well-prepared emergency plan bounce back faster than those without. That's why the 2024 Get Ready Queensland campaign, The Weather Doesn't Plan, But You Can, is here to help every household create a tailored emergency plan.

It's not just about your safety—consider how disruptions could affect those who depend on you. With only 19% of Queenslanders having a written plan, now is the perfect time to take action. Visit Get Ready Queensland to create your emergency plan today and ensure the safety of yourself, your family, and those in your care.

Start planning today.

<https://www.getready.qld.gov.au/plan>



Newsletter

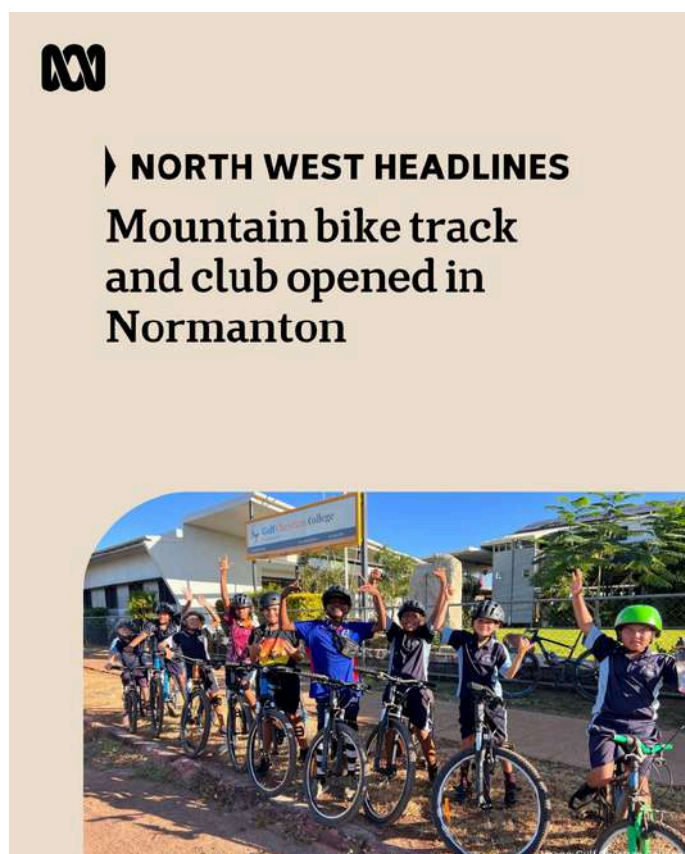
NORMANTON PUMP TRACK

A huge thank you to ABC North West Queensland for shining a spotlight on our brand-new Pump Track, a fantastic addition to our community!

This Council project has been a major success and wouldn't have been possible without funding from the State Government through the Works for Queensland program.

We are incredibly proud of what we have achieved with the Pump Track and it has been great to see everyone out there enjoying this exciting new space! Check out the full story here:

<https://www.facebook.com/share/p/CSSz5YU6XRhPa7SJ/>



MOBILE BLACK SPOT PROGRAM COMMUNITY SURVEY

To date, around 1400 mobile phone towers (base stations) have been funded for delivery under the program, including the base station in our community.

We are keen to hear your thoughts on the mobile service in your area:

- What is working and not working?
- What could be improved?
- What mobile services do you use, and for what purposes?
- The coverage, reliability, and quality of mobile services.
- The range of choices of telecommunications services.
- Any social, economic, and/or safety impacts since the delivery of the base station?

Please take 5-10 minutes to complete the survey via - <https://bit.ly/3zpYFxd>

The survey will remain open until 31 October 2024.

An Australian Government initiative that invests in telecommunications infrastructure to improve mobile coverage and competition.


Mobile Black Spot Program
COMMUNITY CONSULTATION

To date, around 1,400 mobile phone towers (base stations) have been funded for delivery under the program, including the base station in your area.

We are keen to find out from you about:

- Any changes you have experienced since the mobile phone tower (mobile black spot base station) commenced operating in your area, for example:
- Use of mobile services. What services do you use, and for what purposes?
- Coverage, reliability, and quality of mobile services.
- Range of choices of telecommunications services.
- Any social, economic and/or safety impacts.
- Your thoughts on the mobile service in your area. What is working and not working? Your thoughts on what could be improved?

Please complete our survey via the QR code:



Mobile Black Spot Program Evaluation
COMMUNITY SURVEY

Independent evaluation by **Grosvenor**
hello@grosvenor.com.au | www.grosvenor.com.au

Newsletter

COMMUNITY DONATIONS APPLICATION PROCESS

The revised Community Donations policy introduces an application process that will be offered in two rounds each year.

Applications for Round One funding for events and projects occurring between January and June will open October 1st - 31st 2024. Assessment and a report to the Council will occur in November. Applicants will be then notified of the results in December. Round Two will support events and projects taking place from July to December.

For more details, please refer to the updated Community Grants, Donation, and Support Policy available on the Council website:

www.carpentaria.qld.gov.au/community/donations-grants

BEAT THE HEAT

Take care during the higher heats.

To beat the heat, remember to:

- Drink water
- Wear light, loose cotton clothes
- Avoid heavy exercise during the hottest part of the day
- Stay in air conditioning or a cool environment
- Slow down and take it easy
- Avoid hot, closed spaces
- Be sun safe: Wear a hat and sunglasses, keep out of the sun between 10am – 2pm, wear long sleeves and light clothing and apply sunscreen every two hours.

Look out for signs of heat-related illness.

For tips on staying safe in the heat, visit www.health.qld.gov.au/heatsafe

Get updates from the Queensland Bureau of Meteorology.

LOCAL GOVERNMENT ASSOCIATION OF QUEENSLAND'S ANNUAL CONFERENCE

Mayor Jack proudly represented Carpentaria Shire at the Local Government Association of Queensland's Annual Conference, presenting our Karumba Revetment Wall Project during the Coastal Management Workshop.

This vital project showcases our commitment to protecting the coastline and promoting sustainable growth in our region.

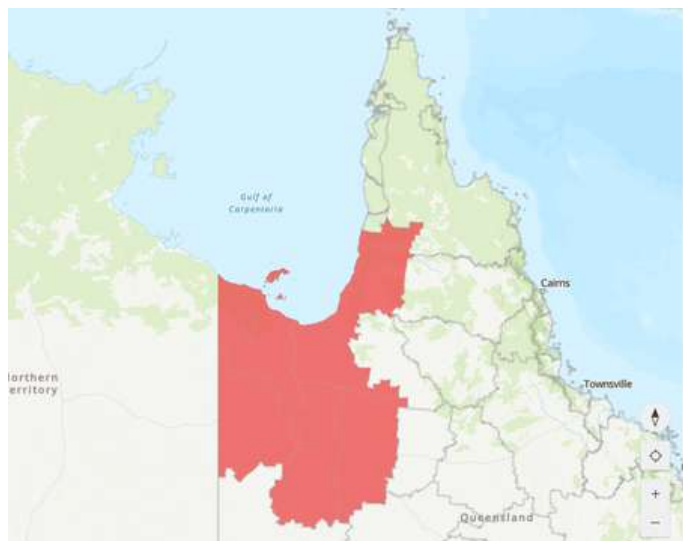


TOTAL FIRE BAN NOTICE

A total fire ban is now in effect until 11:59 PM on October 31st.

For details on what the ban includes and affected areas, visit:

<https://www.fire.qld.gov.au/safety-education/using-fire-outdoors/fire-bans-and-restrictions>



Newsletter

NORMANTON AND KARUMBA WASTE FACILITY

LIVE AMMUNITION

A friendly reminder: Please DO NOT dispose of live ammunition in your general waste bins or at the dump. It's important to follow safety guidelines when disposing to protect our community! For proper disposal, contact local authorities.

THEFT AT THE DUMP

We've noticed an increase in theft at the dump and onsite depot area. Please remember it is illegal to take any items from these locations.

Security cameras are in place, and anyone caught removing items (including IBC Containers) will face fines and potential legal action.

PROPER RUBBISH DISPOSAL AT THE DUMP

To help keep our community clean and efficient, please dispose of your rubbish in the correct, designated areas at the dump. Each section is clearly signed for specific materials, so be sure to follow the guidelines when dropping off your waste.

By doing so, you're helping us manage waste effectively and maintain a safe environment for everyone. Incorrect disposal causes delays, extra costs, and potential hazards.



UPDATED BARRA CENTRE SUMMER HOURS



WHAT'S ON IN NOVEMBER

- **11 REMEMBRANCE DAY**
Details to be confirmed.



- **14 NORMANTON SENIORS CHRISTMAS LUNCHEON**



For full details, see the poster on the back of the newsletter.

- **20-21 COUNCIL MEETING**

Newsletter

LILYVALE RURAL RESIDENTIAL ESTATE SALES PACKAGE



Council has approved a new pricing strategy for the Lilyvale subdivision with all blocks being reduced by 10%.

Stage 1 of the Lilyvale Estate development is a 14-lot subdivision offering generously sized lifestyle lots ranging from 4.61Ha – 12.77Ha*. The estate has been designed to keep in line with the rural character of the region by offering limited lifestyle lots and reserved open space.

Stacey Quad of Colliers Cairns is the current agent for the sale of the blocks and can be contacted on 0418 773 258.

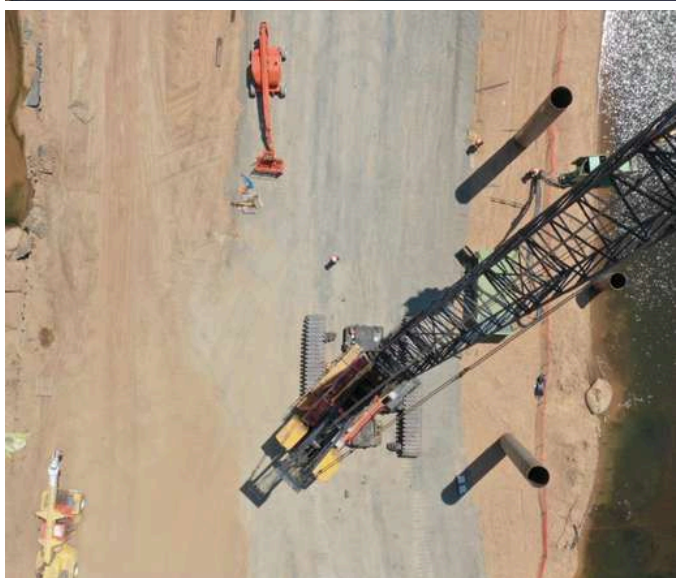
LOT 1	\$106,200	LOT 8	\$246,600
292m frontage onto Lilyvale Road and 200m depth		Corner position with 427m frontage onto Lilyvale Road, 272m frontage onto Barlawink Road and 272m depth	
LOT 2	\$99,000	LOT 23	\$250,200
252m frontage onto Lilyvale Road and 200m depth		Corner position with 430m frontage onto Lilyvale Road, 279m frontage onto Barlawink Road and 289m depth	
LOT 3	\$99,000	LOT 24	190,800
252m frontage onto Lilyvale Road and 200m depth		180m frontage onto Lilyvale Road and 539m depth	
LOT 4	\$99,000	LOT 25	\$190,800
242m frontage onto Lilyvale Road and 200m depth		180m frontage onto Lilyvale Road and 539m depth	
LOT 5	\$99,000	LOT 26	\$99,000
242m frontage onto Lilyvale Road and 200m depth		173m frontage onto Lilyvale Road and 289m depth	
LOT 6	\$99,000	LOT 27	\$99,000
252m frontage onto Lilyvale Road and 200m depth		173m frontage onto Lilyvale Road and 289m depth	
LOT 7	\$99,000	LOT 28	\$90,000
242m frontage onto Lilyvale Road and 200m depth		201m frontage onto Lilyvale Road and 289m depth	

Newsletter

PROJECT UPDATES

MITCHELL RIVER BRIDGE

The bridge contractor has a 250-tonne crane on site and are installing the 1.2m diameter pile steel liners into the ground. 33 steel liners have been made and 24 have been delivered to site. It takes 3 steel liners per trailer to be delivered to site. 45 prestressed precast deck units out of 360 have been cast.



Mitchell River Bridge – Installation of pile steel liner.



Mitchell River Bridge – Delivery of pile steel liner

REVETMENT WALL KARUMBA

The footpath at the top of the revetment wall is under construction and has nearly reached the Sunset Tavern.



Footpath being constructed.



TMR BETTERMENT PROJECT

TMR Betterment Project 11km new pave and seal on 89B – The stabiliser crew have mobilised to site and have started works on this project. They have nearly completed all the subgrade works which includes hauling additional material to undertake formation works. The subgrade have passed all required testing. Road base are currently being carted to site.



TMR Betterment Works – Subgrade works

Newsletter

PROJECT UPDATES

MENTANA CREEK

The culvert and concrete protection works have been completed including general fill. All that is left to do is the construction of the road pavement and bitumen seal. This will be done by the stabiliser crew. Clark Creek is the next project to be started. Council expects to complete the base slab for the culverts before Christmas and to complete the installation of the culverts and concrete protection before June 2025.



Mentana Creek construction

COUNCIL POSITIONS VACANT

- Asset Manager/Specialist
- Childcare Educator
- Customer Service Officer
- Library & Visitor Information Centre Officer
- Project Officer
- Technical Officer - Water

For full details and to view the position descriptions, please visit:

www.carpentaria.qld.gov.au/council/employment/positions-vacant

MEETING DATES FOR NOVEMBER

The Council's Ordinary Meeting for November 2024 is scheduled to take place on Wednesday the 20th, starting at 9:00am in the Council's Boardroom located at Haig Street, Normanton.



Wednesday, 20th November

Thursday, 21st November

CONTACT US

Address: 29-33 Haig Street, Normanton QLD 4890
 Postal: PO Box 31, Normanton QLD 4890
 Email: council@carpentaria.qld.gov.au
 Website: www.carpentaria.qld.gov.au

Normanton Office (07) 4745 2200
 Telephone: (07) 4745 1340
 Fax:

Karumba Library/Service Centre (07) 4747 7522
 Telephone: (07) 4747 7566
 Fax:

Visitor Information Centre (07) 4747 8444
 Normanton (07) 4745 2211
 Karumba

After Hours Emergencies (07) 4745 2200
 Telephone:

Cr Jack Bawden - Mayor	0427 459 424
Cr Brad Hawkins – Deputy Mayor	0418 451 688
Cr Andrew Murphy	0428 451 085
Cr Cherie Schafer	0448 324 911
Cr Glenn Smerdon	0429 451 784
Cr John O'Brien	0427 186 939
Cr Leslie Henry	0407 600 024

Anne Andrews	0417 306 412
Chief Executive Officer	

Michael Wanrooy	0428 131 289
Director Engineering Services	



CARPENTARIA SHIRE
Outback by the Sea®

NORMANTON SENIORS CHRISTMAS LUNCHEON

14
NOV

SHIRE
HALL

11:30
AM

RSVP is essential please call Council
47452200 by the 8th November.
60+ event.
Partners under 60 welcome



CARPENTARIA SHIRE
Outback by the Sea®